



Henri Emile Benoit Matisse

The Snail

Art Appreciation Lesson

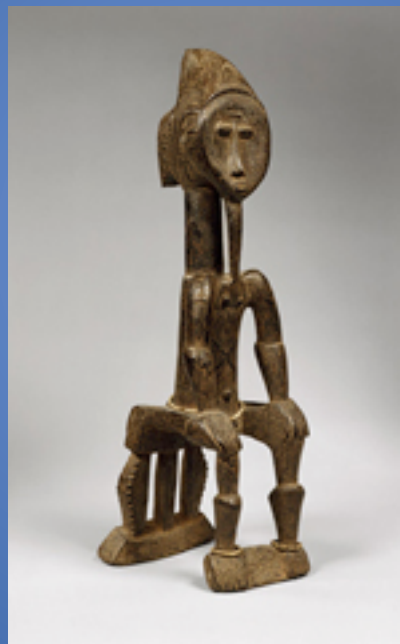
Henri Matisse



- Born in France in 1869
- Father sold seeds and grain
- Mother a dressmaker
- At age 20 he was studying to be a lawyer, but while recovering from an illness he started painting and thereafter made it his life's work
- Is known for using bright, bold, vivid colors in his work
- A founder of the Fauve movement
- Died at the age of 85

Matisse

- Influenced by African Masks and Sculpture and Japanese Prints



Matisse

- Matisse experimented with impressionism and pointillism (Seurat, Van Gogh)
- Fauve means Wild Beasts and refers to the bold use of color. Critics did not think these artists would be successful because they thought they painted like “Wild Beasts.”
- Matisse wanted to create art like “a comfortable arm chair” in which to relax.
- He used many of the same props and backgrounds in his paintings.
- He liked and used abstract forms.
- His body of work consists of paintings, cut outs, sculpture, and textiles.
- He even designed and constructed a chapel in Vence, France which took four years to complete.



Chapelle du Rosaire de Vence

Matisse designed this chapel from top to bottom, inside and out. It took four years and was a « thank you tribute » to a nurse who took care of him while he was ill.

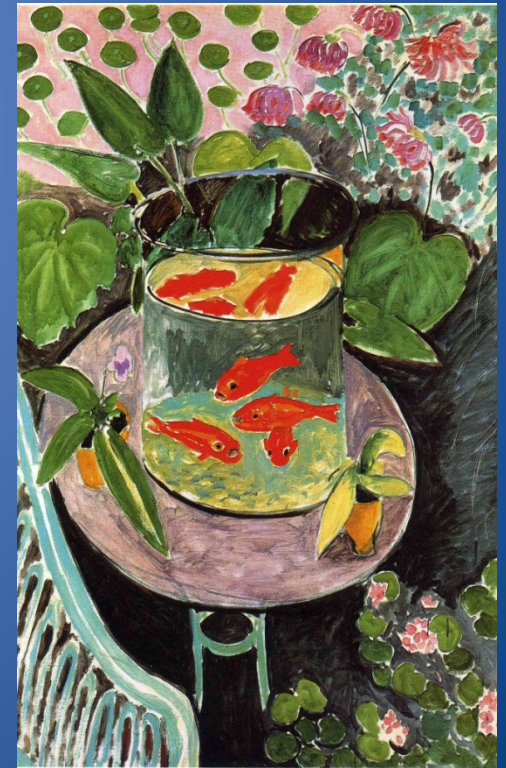


Matisse

After his association with Fauvism ended in 1907, Matisse never belonged to an identifiable movement again.

He believed an artist should not allow himself to become a prisoner of his style or reputation.

His work was extremely versatile .



Matisse

- In 1941, he had an operation and after that required a wheelchair. Several assistants helped him create a series of works using shapes he cut from brightly colored paper.



Matisse

- Now it's time to "Paint with Scissors"
- Here are some other examples of Matisse cut-outs

